

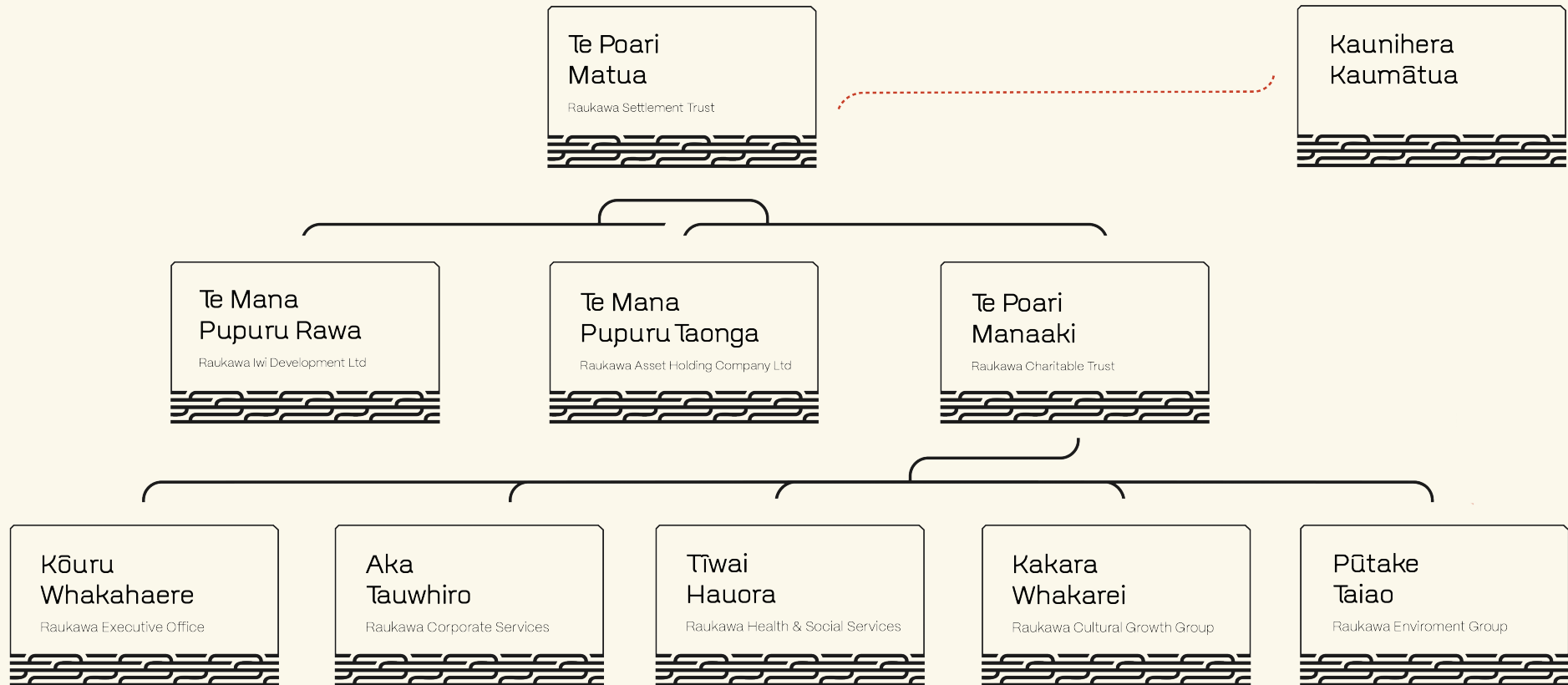


Raukawa

Governance

Governance and Group Structure





Group Structure

We are Raukawa

Our organisation is made up of many moving parts that have different functions and roles, as a whole we collectively form the Raukawa Group. The Raukawa group is led by our elected governors, the Raukawa Settlement Trust, which represents our 16 Raukawa marae and provides the overall direction for the group. Our subsidiary, the Raukawa Charitable Trust, works to deliver our social development aspirations while our commercial and economic aspirations are furthered by our subsidiary company, Raukawa Iwi Development Ltd. Lastly, we are guided by our Kaunihera Kaumātua, who ensure that we uphold the tikanga, mana and mauri of our iwi.



Kataraina Hodge
Whakamārama Marae



Deb Davies
Pikitū Marae



Paraone Gloyne
Ōwairaka (Rāwhitiroa) Marae



Natalia King-Taylor
Tāpapa Marae



Nachelle Griffiths
Ōngāroto Marae



Rina Lawson
Mangakāretu Marae



Gaylene Roberts
Parawera Marae



Louis Armstrong
Ngātira Marae



Arahia Moeke
Paparaamu Marae



John Namana Kopa
Aotearoa Marae



Jordene Sydney
Tangata Marae



Steven Oxenham
Rengarenga Marae



Taihakoa Maui
Mōkai (Pakaketaiari) Marae



Juanita Temarama
Whakaaratamaiti Marae



Donna Parker
Ūkaipō Marae



James Whetu
Ruapeka Marae

Te Poari Matua

Raukawa Settlement Trust

Governance | Te Poari Matua o Raukawa

The Raukawa Settlement Trust is our post settlement governance entity. Underpinned by transparency, accountability and good governance, our Board is made up of 16 elected trustees who are elected by our iwi members for a three-year term.



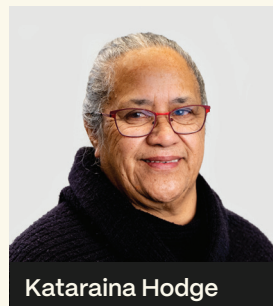
Te Poari Manaaki

Raukawa Charitable Trust

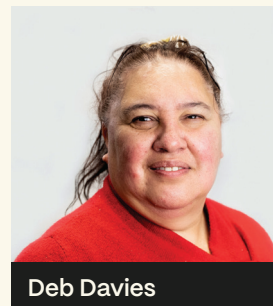


Governance | Te Poari Manaaki o Raukawa

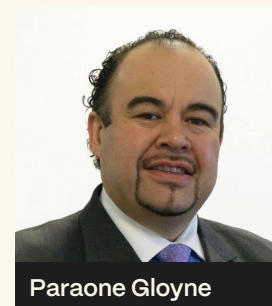
The Raukawa Charitable Trust is tasked with advancing the cultural, social and environmental aspirations of our iwi. Trustees are appointed by the Raukawa Settlement Trust.



Kataraina Hodge



Deb Davies



Paraone Gloyne



Steven Oxenham

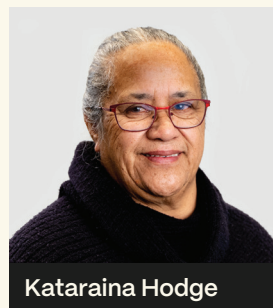


Te Mana Pupuru Rawa

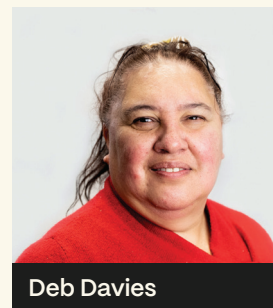
Raukawa Iwi Development Ltd

Governance | Te Mana Pupuru Rawa o Raukawa

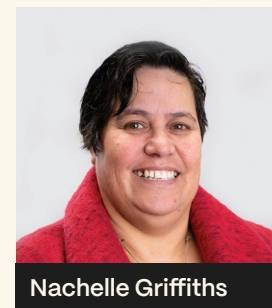
Raukawa Iwi Development Ltd is tasked with growing the commercial assets and interests of our iwi. Directors are appointed by the Raukawa Settlement Trust.



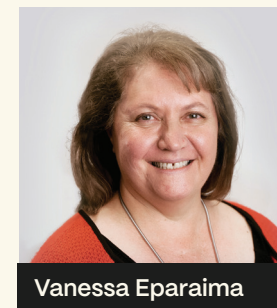
Kataraina Hodge



Deb Davies



Nachele Griffiths



Vanessa Eparaima



Tā Henry van der Heyden



Jon Stokes



Te Mana Pupuru Taonga

Raukawa Asset Holding Company Ltd

Governance | Te Mana Pupuru Taonga o Raukawa

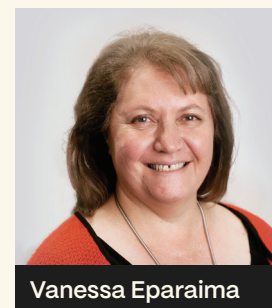
Raukawa Asset Holding Company Ltd is tasked with managing our fisheries settlement assets and interests. Directors are appointed by the Raukawa Settlement Trust.



Tā Henry van der Heyden



Jon Stokes



Vanessa Eparaima



Raukawa
Kia Mau
Kia Ora

1-11 Raukawa Way, Tokoroa, 3420
Private Bag 8, Tokoroa 3444
www.raukawa.org.nz

Last updated 22 January 2024