

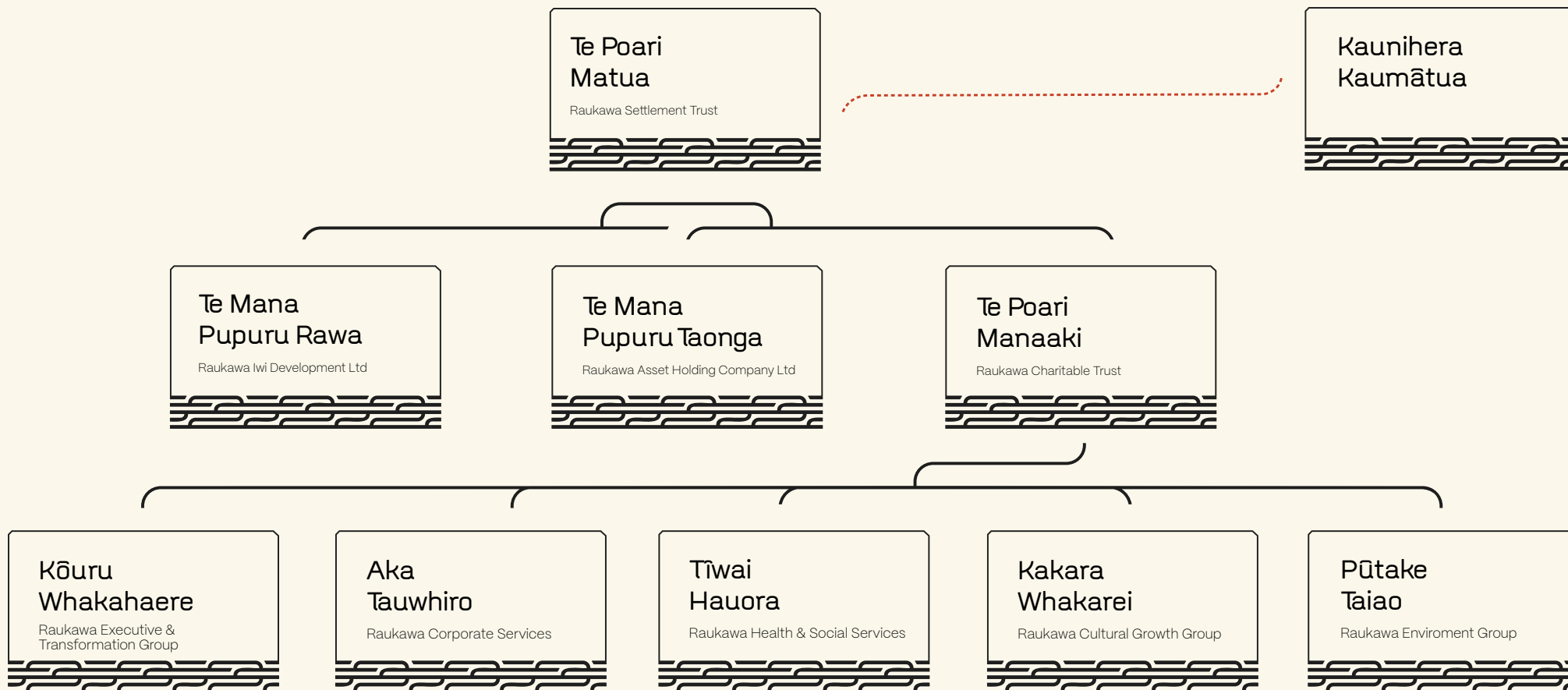


Raukawa

# Governance

Governance and Group Structure





## Group Structure

### We are Raukawa

Our organisation is made up of many moving parts that have different functions and roles, as a whole we collectively form the Raukawa Group. The Raukawa group is led by our elected governors, the Raukawa Settlement Trust, which represents our 16 Raukawa marae and provides the overall direction for the group. Our subsidiary, the Raukawa Charitable Trust, works to deliver our social development aspirations while our commercial and economic aspirations are furthered by our subsidiary company, Raukawa Iwi Development Ltd. Lastly, we are guided by our Kaunihera Kaumātua, who ensure that we uphold the tikanga, mana and mauri of our iwi.



**Kataraina Hodge**  
Whakamārama Marae



**Deb Davies**  
Pikitū Marae



**Paraone Gloyne**  
Ōwairaka (Rāwhitiroa) Marae



**Natalia King-Taylor**  
Tāpapa Marae



**Nachelle Griffiths**  
Ōngāroto Marae



**Rina Lawson**  
Mangakāretu Marae



**Gaylene Roberts**  
Parawera Marae



**Louis Armstrong**  
Ngātira Marae



**Arahia Moeke**  
Paparaamu Marae



**John Namana Kopa**  
Aotearoa Marae



**Jordene Sydney**  
Tangata Marae



**Steven Oxenham**  
Rengarenga Marae



**Taihako Maui**  
Mōkai (Pakaketaiari) Marae



**Juanita Temarama**  
Whakaaratamaiti Marae



**Donna Parker**  
Ūkaipō Marae



**James Whetu**  
Ruapeka Marae



## Te Poari Matua

Raukawa Settlement Trust



## Governance | Te Poari Matua o Raukawa

The Raukawa Settlement Trust is our post settlement governance entity. Underpinned by transparency, accountability and good governance, our Board is made up of 16 elected trustees who are elected by our iwi members for a three-year term.



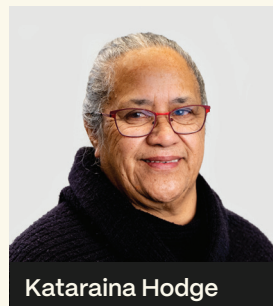
## Te Poari Manaaki

Raukawa Charitable Trust

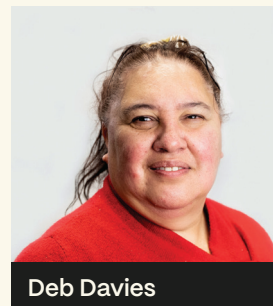


### Governance | Te Poari Manaaki o Raukawa

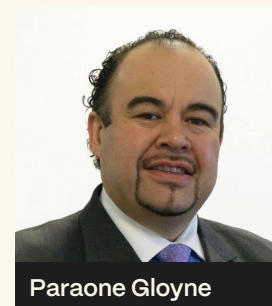
The Raukawa Charitable Trust is tasked with advancing the cultural, social and environmental aspirations of our iwi. Trustees are appointed by the Raukawa Settlement Trust.



Kataraina Hodge



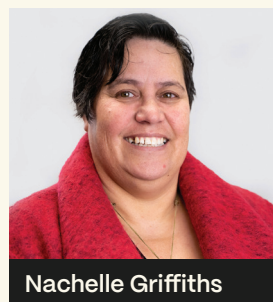
Deb Davies



Paraone Gloyne



Steven Oxenham



Nachele Griffiths



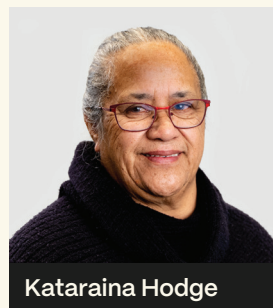


## Te Mana Pupuru Rawa

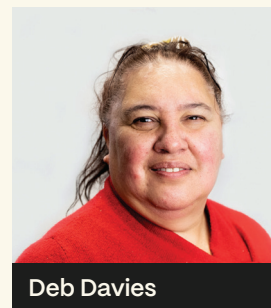
Raukawa Iwi Development Ltd

### Governance | Te Mana Pupuru Rawa o Raukawa

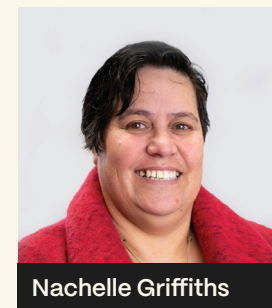
Raukawa Iwi Development Ltd is tasked with growing the commercial assets and interests of our iwi. Directors are appointed by the Raukawa Settlement Trust.



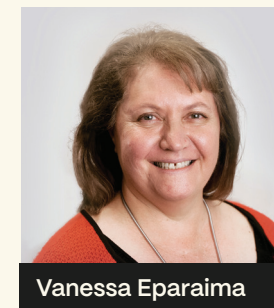
Kataraina Hodge



Deb Davies



Nachele Griffiths



Vanessa Eparaima



Tā Henry van der Heyden



Jon Stokes



## Te Mana Pupuru Taonga

Raukawa Asset Holding Company Ltd

### Governance | Te Mana Pupuru Taonga o Raukawa

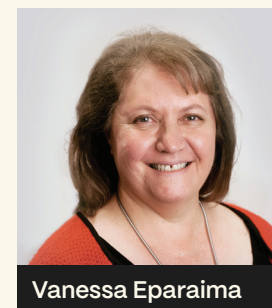
Raukawa Asset Holding Company Ltd is tasked with managing our fisheries settlement assets and interests. Directors are appointed by the Raukawa Settlement Trust.



Tā Henry van der Heyden



Jon Stokes



Vanessa Eparaima



Raukawa  
Kia Mau  
Kia Ora

---

1-11 Raukawa Way, Tokoroa, 3420  
Private Bag 8, Tokoroa 3444  
[www.raukawa.org.nz](http://www.raukawa.org.nz)

Last updated 19 March 2024