

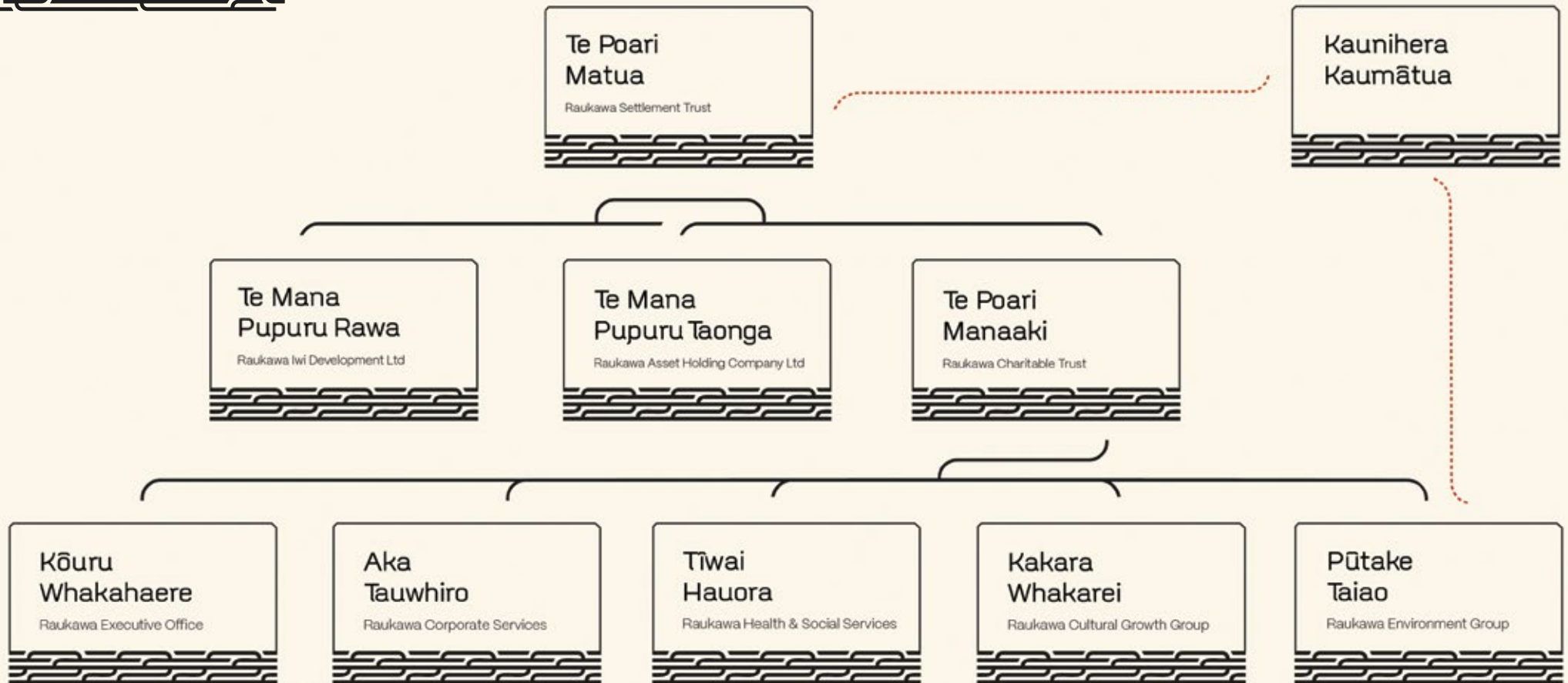


Raukawa

Governance

Governance and Group Structure





Group Structure

We are Raukawa

Our organisation is made up of many moving parts that have different functions and roles, as a whole we collectively form the Raukawa Group. The Raukawa group is led by our elected governors, the Raukawa Settlement Trust, which represents our 16 Raukawa marae and provides the overall direction for the group. Our subsidiary, the Raukawa Charitable Trust, works to deliver our social development aspirations while our commercial and economic aspirations are furthered by our subsidiary company, Raukawa Iwi Development Ltd. Lastly, we are guided by our Kaunihera Kaumātua, who ensure that we uphold the tikanga, mana and mauri of our iwi.



Kataraina Hodge
Whakamārama Marae



Deb Davies
Pikitū Marae



Paraone Gloyne
Ōwairaka (Rāwhitiroa) Marae



Natalia King-Taylor
Tāpapa Marae



Nachele Griffiths
Ōngāroto Marae



Rina Lawson
Mangakāretu Marae



Gaylene Roberts
Parawera Marae



Louis Armstrong
Ngātira Marae



Arahia Moeke
Paparaamu Marae



John Namana Kopa
Aotearoa Marae



Jordene Sydney
Tangata Marae



Steven Oxenham
Rengarenga Marae



Taihako Maui
Mōkai (Pakaketaiari) Marae



Juanita Temarama
Whakaaratamaiti Marae



Donna Parker
Ūkaipō Marae



James Whetu
Ruapeka Marae



Governance | Te Poari Matua o Raukawa

The Raukawa Settlement Trust is our post settlement governance entity. Underpinned by transparency, accountability and good governance, our Board is made up of 16 elected trustees who are elected by our iwi members for a three-year term.



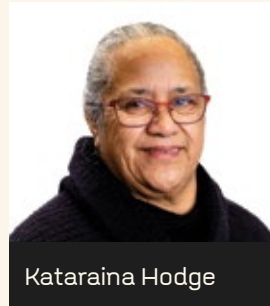
Te Mana Pupuru Rawa

Raukawa Iwi Development Ltd

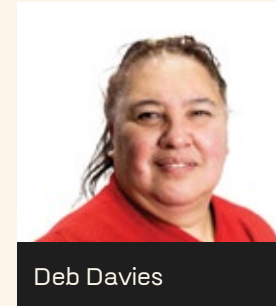


Governance | Te Mana Pupuru Rawa o Raukawa

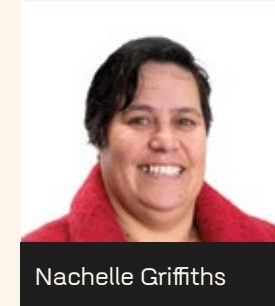
Raukawa Iwi Development Ltd is tasked with growing the commercial assets and interests of our iwi. Directors are appointed by the Raukawa Settlement Trust.



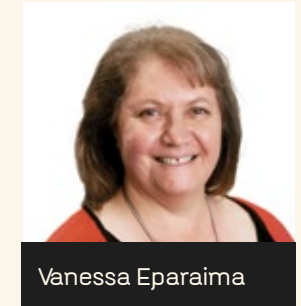
Kataraina Hodge



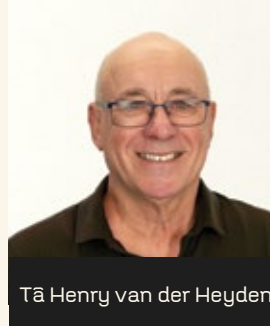
Deb Davies



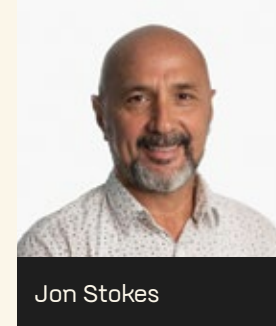
Nachele Griffiths



Vanessa Eparaima



Tā Henry van der Heyden



Jon Stokes

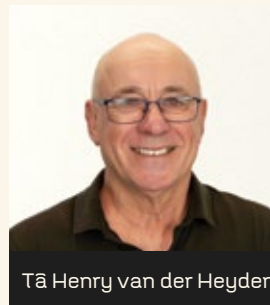
Te Mana Pupuru Taonga

Raukawa Asset Holding Company Ltd



Governance | Te Mana Pupuru Taonga o Raukawa

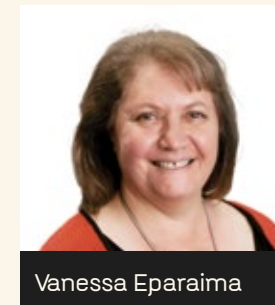
Raukawa Asset Holding Company Ltd is tasked with managing our fisheries settlement assets and interests. Directors are appointed by the Raukawa Settlement Trust.



Tā Henry van der Heyden



Jon Stokes



Vanessa Eparaima



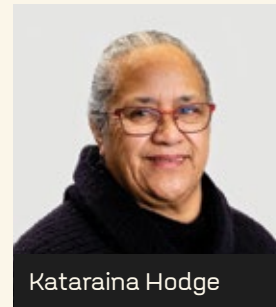
Te Poari
Manaaki

Raukawa Charitable Trust

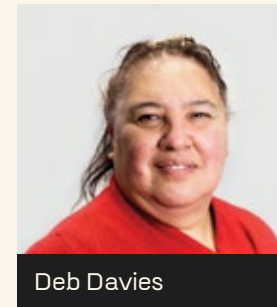


Governance | Te Poari Manaaki o Raukawa

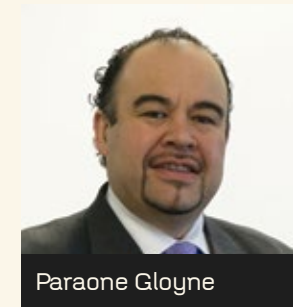
The Raukawa Charitable Trust is tasked with advancing the cultural, social and environmental aspirations of our iwi. Trustees are appointed by the Raukawa Settlement Trust.



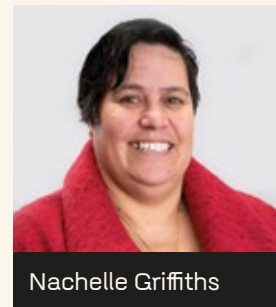
Kataraina Hodge



Deb Davies



Paraone Gloyne



Nachele Griffiths



Steven Oxenham



Te Poari Manaaki

Raukawa Charitable Trust



Raukawa Executive Leadership Team

Our Executive Leadership Team guides the organisation's strategic direction at an operational level within the Raukawa Charitable Trust, making high-level decisions to drive growth and ensure efficiency. Comprising senior leadership, our team sets priorities, oversees major initiatives, and fosters cross-departmental collaboration to align with the vision of Raukawa.



Maria Te Kanawa
Tāhuhu Rangapū
Raukawa Executive Office
Manager



Aamer Daji
Kōuru Whakahaere
Raukawa Executive &
Transformation Group Manager



Peter O'Brien
Tiwai Hauora
Raukawa Health and Social
Development Group Manager



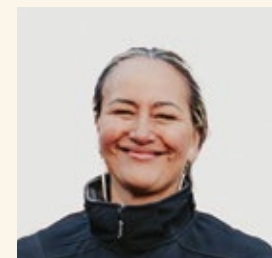
Anaru Begbie
Pūtake Taiao
Raukawa Environment Group
Manager



Tui Kaa
Kakara Whakarei
Raukawa Cultural Growth Group
Manager



Ngawati Smiler
Aka Tauwhiro
Raukawa Corporate Services
Manager



Kim Blomfield
Kōuru Whakahaere
Executive Assistant Governance
Manager



Kelsi Motutere
Kōuru Whakahaere
HR Business Partner



Raukawa
Kia Mau
Kia Ora

1-11 Raukawa Way, Tokoroa, 3420
Private Bag 8, Tokoroa 3444
www.raukawa.org.nz

Last updated 6 August 2024